

STORMWATER CAPITAL IMPROVEMENT PLAN

EPHRATA BOROUGH AUTHORITY'S
STORMWATER CAPITAL IMPROVEMENT PLAN



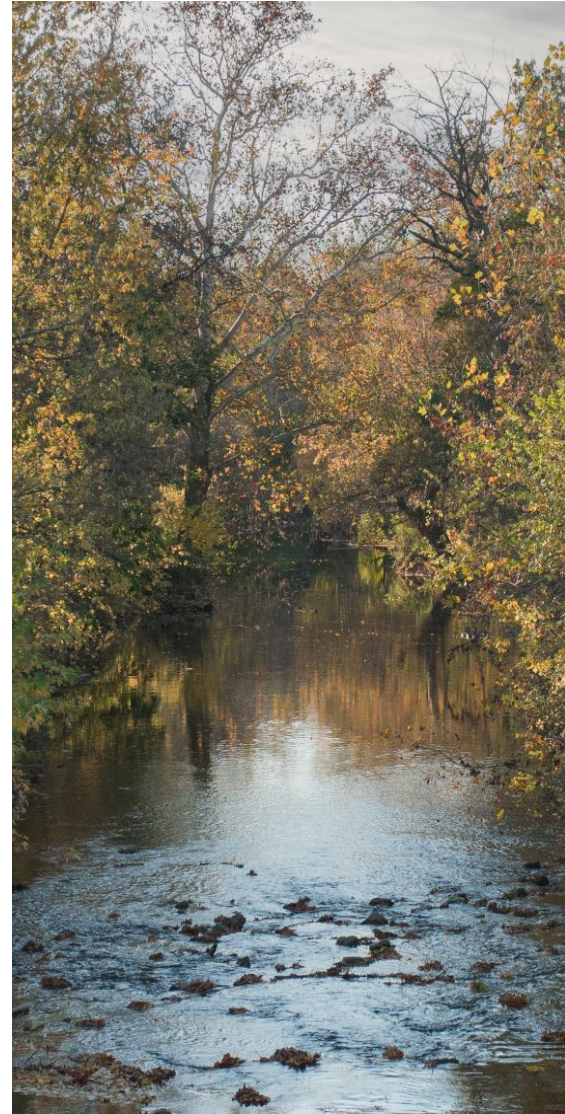
JUNE 2025

Ephrata Borough is taking a proactive approach to meet the community's stormwater program needs including addressing both long-standing flooding concerns and newer water quality requirements under state permits. As of 2025, the Borough will be approaching stormwater as a utility with a dedicated revenue stream and a capital improvement plan to address stormwater concerns and federal and state stormwater requirements.

With the establishment of Ephrata Borough Authority's (Authority) stormwater utility and associated stormwater fee and credits, the Authority has developed an intentional program for moving forward in addressing stormwater needs in the Borough. Furthermore, the financial needs of the program are more equitably distributed amongst property owners.

Ephrata Borough's stormwater management needs include operation and maintenance items such as replacing pipes and clearing drains, along with larger capital improvements. These larger-scale projects involve designing and constructing new infrastructure to reduce flooding and improve drainage patterns. To manage these larger projects, the Authority created a capital improvement plan (CIP) that outlines infrastructure improvements.

The CIP has been developed and will be updated based on known priority projects in the Borough, where sufficient information exists to determine the best solution. The plan provides a path forward to proceed with engineering, design, financing, and construction of the necessary improvements to address known areas of flooding. The Authority recognizes that there are some areas where further study is needed to understand the stormwater issues and better identify appropriate solutions. As further assessment occurs and new information becomes available the Authority will continue to update its CIP.



REGULAR FLOODING THROUGHOUT THE BOROUGH RESULTS IN



IMPASSABLE
ROADWAYS



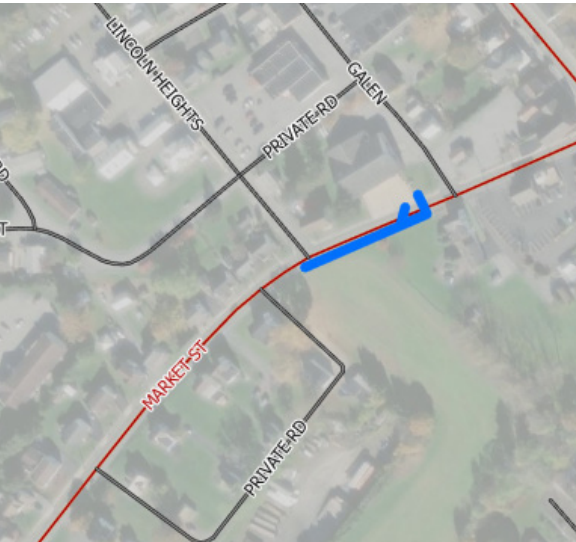
INACCESSIBLE
PROPERTIES



DAMAGE TO
PROPERTY

PRIORITY CAPITAL IMPROVEMENTS

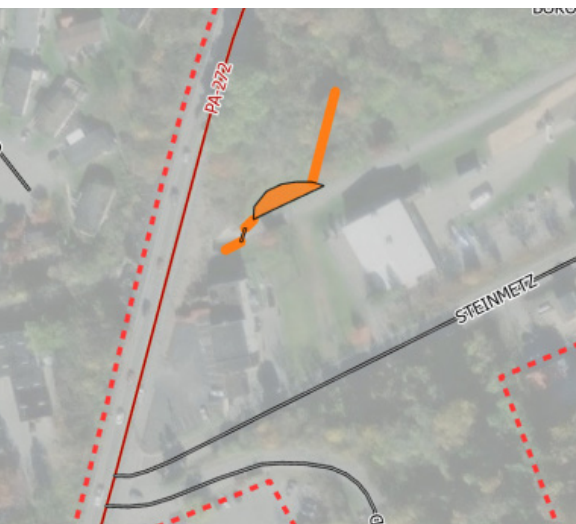
The Authority's CIP identifies five priority projects that the Authority is in the process of planning and constructing. The graphic highlights the current status of the project.



1 SOUTH MARKET STREET STORMWATER IMPROVEMENTS

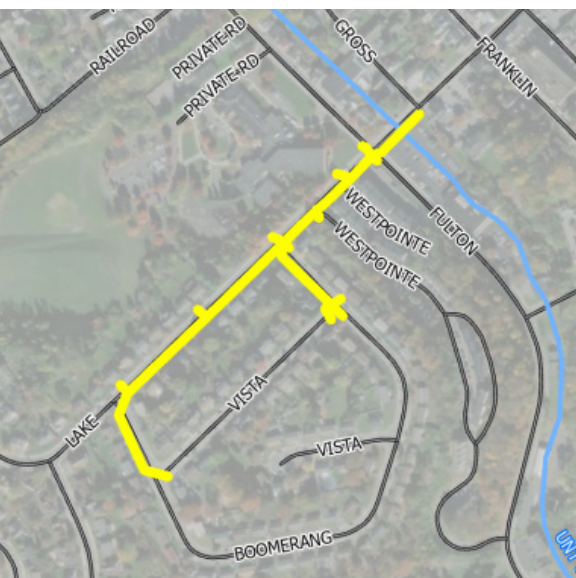
South Market Street has aging and deteriorating stormwater infrastructure, that restrict flow and reduce system reliability. As a result, the area is more vulnerable to localized flooding, especially during significant rain events.

Planned upgrades will replace the failing infrastructure improving drainage and helping to safeguard local roads and properties.



2 RAIL TRAIL FLOOD MITIGATION

New stormwater infrastructure, including area drains and a rain garden, will be installed to manage water that collects near the South State Street tunnel along the rail trail. Since the area currently has no stormwater system, these improvements will help reduce frequent ponding and trail closures.



3 LAKE STREET STORMWATER IMPROVEMENTS

Infrastructure replacements along Lake Street will upgrade aging and undersized stormwater pipes that no longer meet the area's needs. Replacing the failing stormwater infrastructure will improve the system's capacity to handle stormwater, reduce the risk of localized flooding, protecting nearby properties and roadways.

4 CIRCLE DRIVE STORMWATER IMPROVEMENTS

The stormwater system along Circle Drive has aging infrastructure, including rusted corrugated metal pipes that are well past their service life. These deteriorating pipes limit the system's ability to manage runoff effectively, increasing the risk of localized flooding.

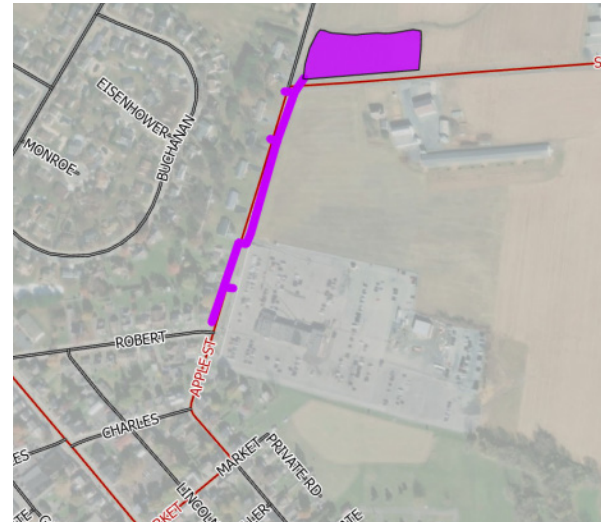
This project will replace the aging infrastructure, improving drainage capacity, reducing the risk of flooding, damage to the road surface, and supporting the long-term reliability of the system.



5 APPLE STREET FLOOD MITIGATION

Reducing flooding along Apple Street will require partnership with Ephrata Township, as some of the improvements extend across municipal boundaries.

This project will replace aging stormwater infrastructure and add a new infiltration basin to help manage runoff more effectively. Beyond improving flood mitigation, the basin will also provide important water quality benefits by filtering stormwater before it reaches local waterways.



ONGOING ASSESSMENT & FUTURE FLOOD MITIGATION

Additional flood mitigation projects are needed in other areas of the Borough not mentioned in this plan. To guide future investments, the Authority intends to conduct a system-wide assessment to evaluate the condition of existing stormwater infrastructure. This assessment will help identify areas of concern, assist in prioritizing projects, and ensure that future investments are planned effectively and efficiently. The Authority will also consider feedback from property owners. If you have any stormwater concerns, please submit them through the online request tracker (<https://ephrataboro.org/requesttracker.aspx>).